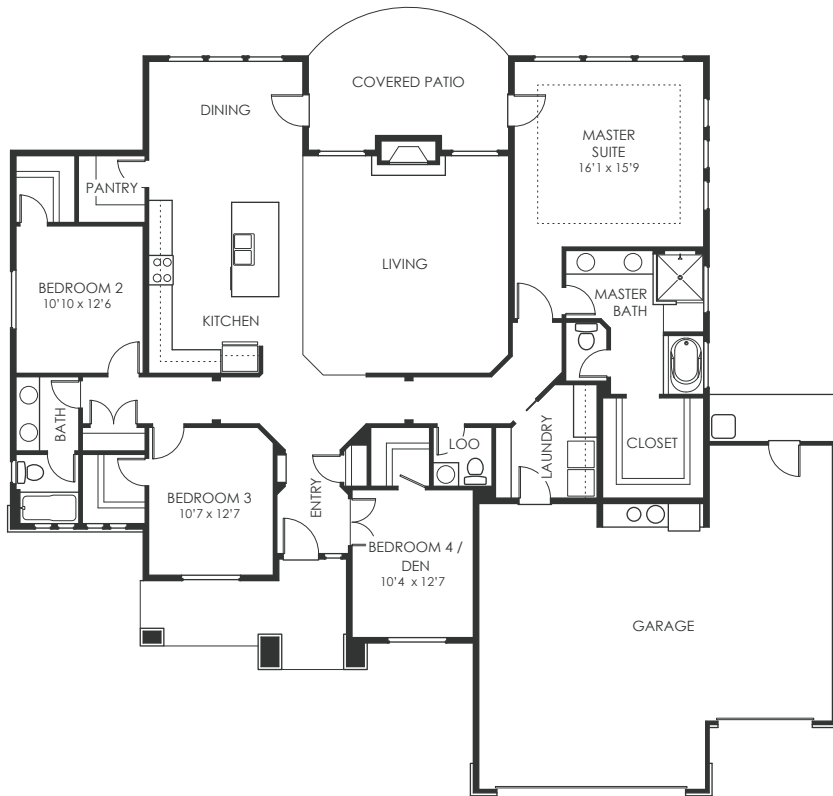


THE ASPEN

2,282 Sq. Ft. • 3 Bedrooms • 2.5 Bathrooms • 3 Car Garage • Office / 4th Bedroom



The Aspen by Eaglewood Homes is one of our most luxurious single level homes. The Aspen boasts huge open spaces with ten-foot ceilings and eight-foot doors throughout. The entry opens up to a spacious kitchen, living room, and dining room naturally lit with oversized windows looking out on the backyard. The master suite is impressive with recessed ceilings, huge windows, and a bathroom with a deep soaker tub and glass half-wall shower. The den can easily be used as a 4th bedroom and has a hidden door in the trim work that leads to its own walk-in closet.



Photos may depict upgrades or changes which are not included in the base price of this home.

At Eaglewood, we constantly strive to offer modern homes of outstanding craftsmanship and incredible value and, as a result, some design features and details may change from home to home. While we do try to keep all of our photos and plans up-to-date, please be advised that these photos do not constitute any contractual obligation between Eaglewood and the homeowner. Please verify all details in your plans and specification sheet at the time of contract.

info@eaglewood.com
208-855-0502
www.eaglewood.com

THE ASPEN

STANDARD FEATURES

- 10' ceilings & 8' doors throughout
- Full stucco exterior
- Tile & granite in 2nd bathroom
- Walk-in closets in all bedrooms
- Glass half wall shower in master
- Vessel sink in powder bath
- Wainscoting & secret door in den
- Art niche in entry

POPULAR UPGRADES

- Hard surface flooring in laundry
- Stone to ceiling on fireplace
- Counter-top cabinet in master bath

